

European eel (*Anguilla anguilla*) throughout its natural range

ICES advice on fishing opportunities

ICES advises that when the precautionary approach is applied, there should be zero catches in all habitats in 2024. This applies to both recreational and commercial catches and includes catches of glass eels for restocking and aquaculture.

ICES advice on conservation aspects

Based on ecosystem-based management considerations, ICES advises that:

- all non-fisheries related anthropogenic mortalities should be zero.
- the quantity and quality of eel habitats should be restored; this includes restoring connectivity and the physical, chemical, and biological properties of the habitats.

Stock development over time

The status of European eel remains critical. Indices of both glass and yellow eel recruitment strongly declined from 1980 to 2011. Index values correspond to the recruitment as a percentage of the 1960–1979 geometric mean. Glass eel recruitment in the “North Sea” index area was 0.4% in 2023 (provisional) and 0.7% in 2022 (final). In the “Elsewhere Europe” index series it was 8.8% in 2023 (provisional) and 11.3% in 2022 (final). The yellow eel recruitment index for 2022 was 9% (final) of the 1960–1979 geometric mean. Time-series from 1980 to 2023 show that eel recruitment remains at a very low level.

ICES cannot assess the exploitation status relative to maximum sustainable yield (MSY) or precautionary approach (PA) reference points because the reference points are undefined. The 1960–1979 geometric mean recruitment is considered a likely limit reference point (R_{lim}). Given that the current recruitment estimate has been below R_{lim} for many years, it is assumed that current biomass is below a potential B_{lim} . Therefore, while stock-size reference points are also undefined, it is considered that the stock size is well below potential biological limit reference points.

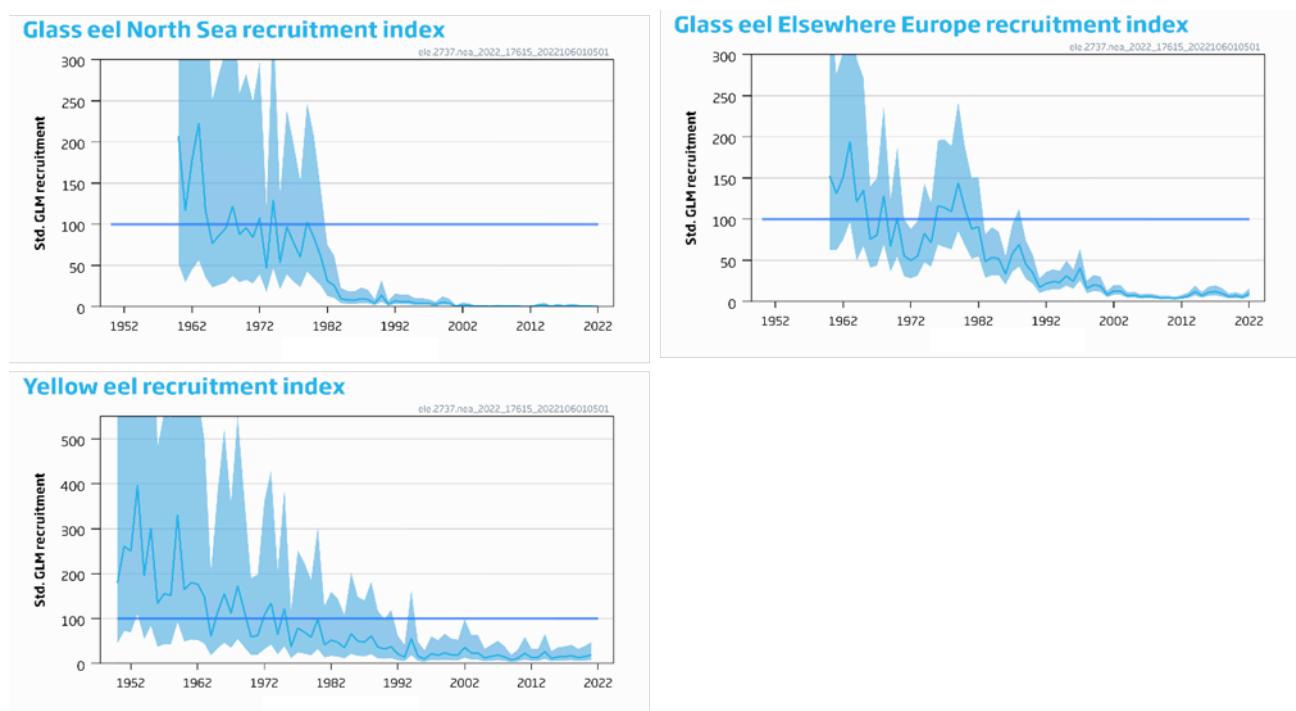


Figure 1 European eel. Indices, geometric mean of estimated glass eel recruitment for the continental “North Sea” (top-left panel) and “Elsewhere Europe” (top-right panel) series. A statistical model was fitted to 60 time-series comprising either pure glass eel or a mixture of glass and yellow eels (34 “North Sea” and 26 “Elsewhere Europe”). The results were scaled in percentage to the 1960–1979 geometric mean. The “North Sea” series are from Norway, Sweden,

Germany, Denmark, the Netherlands, UK, and Belgium; the “Elsewhere” series are from UK, Ireland, France, Spain, Portugal, and Italy. In the Baltic area, recruitment occurs at the yellow eel stage only, and series are thus not included in the glass eel recruitment index. Bottom panel: estimated yellow eel recruitment trends for Europe. A statistical model was fitted to 21 yellow eel time-series and scaled in percentage to the 1960–1979 geometric mean. The series are from Denmark, Germany, Ireland, Sweden, France, and UK. The horizontal blue line on each panel represents the likely R_{lim} (calculated from the 1960–1979 geometric mean). Ribbons show 95% prediction interval of the GLM ($1.96 \times$ standard error).

Conservation status

Non-fisheries related anthropogenic mortalities are not reliably quantified (ICES, 2022a), and no reference points are defined.

The European eel (*Anguilla anguilla*) has been categorized on the IUCN Red List as Critically Endangered since 2008 and was last evaluated in in 2018 (Pike *et al.*, 2020).

Catch scenarios

ICES is not in a position to provide catch scenarios in the absence of accurate catch information.

Basis of the advice

Table 1a The basis of the advice for **fishing opportunities**

| Advice basis | Precautionary approach |
|-----------------|--|
| Management plan | <p>A management framework for eel within the EU was established in 2007 by Council Regulation (EC) No. 1100/2007 (EU, 2007) with the objective of achieving at least 40% of pristine silver eel escapement. The General Fisheries Commission for the Mediterranean (GFCM) adopted Recommendation GFCM/42/2018/1 (GFCM, 2018), establishing management measures for European eel (<i>Anguilla anguilla</i>) in the Mediterranean Sea, which was amended in GFCM/45/2022/1 (GFCM, 2022).</p> <p>These management plans have not been evaluated by ICES for their conformity with the precautionary approach and, for this reason, have not been used as the basis for the advice.</p> <p>Eel fisheries in EU waters are further regulated in Council Regulation (EU) No 2023/194 on ‘Fishing Opportunities’ (EU Council, 2023) and in the Commission Implementing Decision (EU) No 2018/1986 ‘Specific Control and Inspection Programme’ (EC, 2018; amended by Commission Implementing Decision [EU] 2020/1320).</p> |

Table 1b The basis of the advice for **conservation aspects**

| Advice basis | Ecosystem-based management (EBM) considerations |
|--------------------------------|---|
| Existing conservation measures | <p>The European eel (<i>Anguilla anguilla</i>) has been listed as Critically Endangered on the IUCN Red List since 2008 (Pike <i>et al.</i>, 2020.), in the CITES Appendix II since 2007 (CITES, 2007, 2022), and in the EU implementation of CITES rules (Annex B to Council Regulation [EC] No 338/97; EU Council, 1996) since 2009.</p> <p>European eel was added to Appendix II of the Convention on the Conservation of Migratory Species of Wild Animals (CMS) in 2014 (CMS, 2018).</p> <p>European eel was included on the OSPAR List of Threatened and/or Declining Species and Habitats in 2008. In 2014, the Convention for the Protection of the Marine Environment of the North-East Atlantic (OSPAR Convention) issued a recommendation to strengthen the protection of the European eel at all life stages (OSPAR, 2014). The status of European eel is still very poor in all OSPAR regions (OSPAR, 2022).</p> <p>The Baltic Sea Action Plan (BSAP) of the Baltic Marine Environment Protection Commission (HELCOM) contains several targets for the European eel (HELCOM, 2007; updated 2021).</p> <p>National conservation measures are in the report on the technical evaluation of EU Member State progress reports for submission in 2021 (WKEMP), Eel Management Plan progress reports, and WGEEL country reports (ICES, 2022a, 2023a); ICES is not aware of any information for countries not listed in these reports.</p> <p>Other international legislation relevant to eel conservation:</p> <ul style="list-style-type: none"> • Directive 2000/60/EC, known as the Water Framework Directive (WFD; EU, 2000) • Directive 2008/56/EC, known as the Marine Strategy Framework Directive (MSFD; EU, 2008). • Council Directive 92/43/EEC, known as the Habitats Directive (EU, 1992) • The Ramsar Convention on Wetlands (UN, 1976) aims to stem the loss of and progressive encroachment on wetlands, an important European eel habitat. |

Quality of the assessment

The assessment is based on two glass eel recruitment indices and a yellow eel recruitment index, each comprising multiple time-series. The indices are fitted based on data from fisheries and scientific surveys, forming the longest and most reliable time-series that constitute an index of abundance.

In the absence of precise quantitative information on the spatial distribution of recruitment, the model does not weigh time-series. As a consequence, a time-series collected in a zone with low recruitment has the same weight as one collected in a zone of higher recruitment. Moreover, in the absence of weighting, regions with numerous time-series have a greater weight than data-limited regions in the resulting recruitment index.

Total landings and effort data are incomplete. In addition, a great heterogeneity is present among the time-series of landings owing to inconsistencies in reporting by, and between, countries. Changes in eel management practices have also affected commercial and non-commercial/recreational fisheries and the reporting of these fisheries.

Data deficiencies in reports on recreational fisheries are described by ICES (2016a). Although this has improved, landings in recreational fisheries remain largely unquantified. Estimates from countries, where available, show that landings of yellow and silver eels from recreational fisheries can be of the same order of magnitude as those of commercial fisheries.

The annual eel data call, issued for the first time in 2017, has substantially improved the coverage and completeness of the data being reported to ICES. National estimates of biomass indicators, mortality rates, and associated data are requested once every third year, in line with reporting on Eel Management Plan (EMP) implementation progress to the European Commission. The most recent call was issued in 2023 (ICES, 2023b). Data on eel, fisheries, and other anthropogenic impacts across the whole stock, however, remain incomplete because there is no single international legislative requirement to collect and provide data that cover the entire stock area.

Issues relevant for the advice

On fishing opportunities

Restocking

ICES notes that the restocking of eels (the practice of moving eels from one waterbody to another) is intended as a *conservation measure* in EU Council Regulation (EC) No. 1100/2007 (EU Council, 2007) and is implemented in many eel management plans. Restocking is reliant on a glass eel catch, which is in contradiction with the current advice.

The net benefit of restocking to the reproductive potential of the eel stock is unknown. It requires information on e.g. the carrying capacity of glass eel source estuaries, reliable mortality estimates at each step of the restocking process, and the spawning potential of stocked vs. non-stocked eels. While a local increase in eel production may be apparent (ICES, 2016b), an assessment of net benefit to the spawning stock was unquantifiable. When constrained by the above-mentioned uncertainties and potential harmful effects, while following the precautionary approach, no catch for restocking should be allowed.

Assisted migration

ICES acknowledges that catches for the purpose of subsequent release to improve survival may be part of temporary conservation measures. For example, where dams exist and prevent downstream or upstream migration of silver and glass eel, transfer across barriers within the same waterbody could be considered if it is likely that the associated mortality is less than that in the absence of such measures. Upstream assisted migration should only be applied if the future escapement of silver eels is ensured. In such conditions, the current advice does not apply to these catches.

Aquaculture

Since cultured eels are always wild caught and either permanently removed from the stock (for consumption) or used for restocking (and hence not for conservation purposes following the definition above), no catch for aquaculture purposes should be allowed.

On conservation aspects

Other anthropogenic impacts

Non-fisheries anthropogenic impacts are substantial (ICES, 2019, 2020, 2021a, 2022b) and can be grouped into the following: (a) hydropower, pumping stations, and other water intakes; (b) habitat loss or degradation; (c) pollution, diseases, and parasites; and (d) other management actions that may affect levels of predation (e.g. conservation of predators vs. control of predators). These impacts vary over a range of temporal and spatial scales. There are effects from climate change, but these are not well understood.

The implementation of environmental legislation (e.g. the EU Water Framework [WFD] and the Marine Strategy Framework directives [MSFD]) aims to improve the continental environment in marine, transitional, and freshwaters and could have a positive effect on the reproductive potential of silver eel.

At present, ICES is not able to quantify the level and the relative impact of non-fisheries anthropogenic factors on the reproductive capacity of the stock. However, given the state of the stock, all other anthropogenic impacts (e.g. those caused by hydropower, pumping stations, and pollution) that decrease production and escapement of silver eels should be zero.

Other aspects

Illegal, unreported, and unregulated (IUU) fishing is known to occur, and customs seizures indicate that the illegal export of glass eel could be substantial. Some countries have reported the level of misreporting and illegal fisheries (i.e. the seizure of illegal nets as well as the illegal trade of glass eels from countries both inside and outside the EU) to ICES, EIFAAC, or

GFCM. However, there are insufficient data available to quantify their effect on the total stock size or status with any level of certainty.

Total landings of yellow and silver eel are still currently high, around 2000 tonnes in 2022, with several countries reporting landings over 100 tonnes *per year* in the latest decade.

Reference points

No biomass or fishing mortality reference points are formally defined for this stock. For the time being, the 1960–1979 recruitment is considered a potential limit reference point (R_{lim} ; ICES, 2021b)

Basis of the assessment

Table 2 European eel. Basis of the assessment.

| | |
|--------------------------|--|
| ICES stock data category | 3 (ICES, 2023c) |
| Assessment type | Trend analysis, GLM of glass and yellow eel recruitment indices |
| Input data | Glass eel and yellow eel recruitment indices (informed by 60 glass eel and 21 yellow eel) time-series) |
| Discards and bycatch | Not included |
| Indicators | None |
| Other information | None |
| Working group | Joint EIFAAC/ICES/GFCM Working Group on Eels (WGEEL) |

History of the advice, catch, and management

Table 3 European eel. History of ICES advice.

| Year | ICES advice | Predicted catch corresponding to the advice | TAC* | ICES catch** |
|------|--|---|------|--------------|
| 1999 | Recovery plan | - | - | - |
| 2000 | No fishery and a recovery plan | 0 | - | - |
| 2001 | A recovery plan should be implemented for the eel stock, and fishing mortality should be reduced to the lowest possible level until such a plan is agreed upon and implemented | - | - | - |
| 2002 | Exploitation should be reduced to the lowest possible level until a recovery plan is agreed upon and implemented | - | - | - |
| 2003 | All anthropogenic mortality as close to zero as possible until a recovery plan is agreed upon and implemented | - | - | - |
| 2004 | - | - | - | - |
| 2005 | - | - | - | - |
| 2006 | All anthropogenic mortality as close to zero as possible until a recovery plan is agreed upon and implemented | - | - | - |
| 2007 | All exploitation and other anthropogenic impacts should be reduced to a level as close to zero as possible, and a recovery plan for the whole stock should be implemented urgently | - | - | - |
| 2008 | All exploitation and other anthropogenic impacts should be reduced to as low as possible until there are clear signs of recovery | - | - | - |
| 2009 | All exploitation and other anthropogenic impacts should be reduced to as close to zero as possible | - | - | - |
| 2010 | All anthropogenic impacts should be reduced to as close to zero as possible until stock recovery is achieved | - | - | - |
| 2011 | All anthropogenic mortality as close to zero as possible until there is clear evidence that the stock is increasing | - | - | - |
| 2012 | All anthropogenic mortality as close to zero as possible until there is clear evidence that both recruitment and the adult stock are increasing | - | - | - |
| 2013 | All anthropogenic mortality as close to zero as possible until there is clear evidence that both recruitment and the adult stock are increasing | - | - | - |
| 2014 | All anthropogenic mortality as close to zero as possible until there is clear evidence of sustained increase in both recruitment and the adult stock | - | - | - |

| Year | ICES advice | Predicted catch corresponding to the advice | TAC* | ICES catch** |
|------|--|---|------|--------------|
| 2015 | All anthropogenic mortality as close to zero as possible | - | - | - |
| 2016 | All anthropogenic mortality as close to zero as possible | - | - | - |
| 2017 | All anthropogenic impacts as close to zero as possible | - | - | - |
| 2018 | All anthropogenic impacts as close to zero as possible | - | - | - |
| 2019 | All anthropogenic impacts as close to zero as possible | - | - | - |
| 2020 | All anthropogenic impacts as close to zero as possible | - | - | - |
| 2021 | All anthropogenic impacts as close to zero as possible | - | - | - |
| 2022 | Precautionary approach | 0 | | |
| 2023 | Precautionary approach | 0 | | |
| 2024 | Precautionary approach | 0 | | |

* There has never been a TAC for this stock.

** There are no ICES catch estimates for the entire stock.

History of catch and landings

Landings data are not complete for the entire natural range of the European eel.

Table 4 European eel. Commercial landings (tonnes) of glass eel (1945–2023), as reported to ICES by EU Member States (France [FR], Spain [ES], Portugal [PT], and Italy [IT]) and United Kingdom (GB), combining information from the 2023 data call and the WGEEL database. Empty cell = no data, data not collected, or data not pertinent.

| Year | GB | FR | ES | PT | IT | Total |
|------|------|------|-------|------|----|--------|
| 1945 | | | 119.2 | | | 119.2 |
| 1946 | | | 71.9 | | | 71.9 |
| 1947 | | | 100.1 | | | 100.1 |
| 1948 | | | 110.6 | | | 110.6 |
| 1949 | | | 9.3 | | | 9.3 |
| 1950 | | | 3.8 | | | 3.8 |
| 1951 | | | 2.1 | | | 2.1 |
| 1953 | | | 2.5 | | | 2.5 |
| 1954 | | | 5.9 | | | 5.9 |
| 1955 | | | 0.9 | | | 0.9 |
| 1956 | | | 0.9 | | | 0.9 |
| 1957 | | | 2.8 | | | 2.8 |
| 1958 | | | 0.4 | | | 0.4 |
| 1959 | | | 6.6 | | | 6.6 |
| 1960 | | | 9.5 | | | 9.5 |
| 1961 | | | 16.7 | | | 16.7 |
| 1962 | | | 11.1 | | | 11.1 |
| 1963 | | | 8 | | | 8 |
| 1964 | | | 11 | | | 11 |
| 1965 | | | 4 | | | 4 |
| 1966 | | | 6 | | | 6 |
| 1967 | | | 5 | | | 5 |
| 1968 | | | 4 | | | 4 |
| 1969 | | | 4 | | | 4 |
| 1970 | | | 5 | | | 5 |
| 1971 | | | 1 | | | 1 |
| 1972 | 16.7 | | 1 | | | 17.7 |
| 1973 | 28.2 | | 1 | | | 29.2 |
| 1974 | 57.5 | | 2 | 1.6 | | 61.1 |
| 1975 | 10.5 | | 2.6 | 5.6 | | 18.7 |
| 1976 | 13.1 | | 11.6 | 12.5 | | 37.2 |
| 1977 | 38.6 | | 17.5 | 22.6 | | 78.7 |
| 1978 | 61.2 | 1393 | 21.6 | 7.3 | | 1483.1 |
| 1979 | 67 | 1850 | 17.3 | 8.8 | | 1943.1 |

| Year | GB | FR | ES | PT | IT | Total |
|-------|------|------|------|------|-----|--------|
| 1980 | 40.1 | 1491 | 15.4 | 10.1 | | 1556.6 |
| 1981 | 36.9 | 890 | 13 | 18.1 | | 958 |
| 1982 | 48 | 866 | 19.3 | 22.2 | | 955.5 |
| 1983 | 16.9 | 791 | 10.3 | 6.7 | | 825 |
| 1984 | 25 | 528 | 16.4 | 16.1 | | 585.5 |
| 1985 | 20 | 444 | 18.3 | 14.8 | | 497.1 |
| 1986 | 19 | 423 | 6.4 | 7 | | 455.4 |
| 1987 | 21.3 | 461 | 9.4 | 9.5 | | 501.2 |
| 1988 | 21.4 | 504 | 9.9 | 2.6 | | 537.8 |
| 1989 | 20.6 | 410 | 9.9 | 2.8 | | 443.3 |
| 1990 | 20.9 | 325 | 5.3 | 4.5 | | 355.7 |
| 1991 | 1.1 | 179 | 6.8 | 2.8 | | 189.7 |
| 1992 | 5 | 183 | 3.7 | 4.5 | | 196.1 |
| 1993 | 5.7 | 329 | 5.2 | 3.6 | | 343.6 |
| 1994 | 9.5 | 329 | 2.4 | 2.9 | | 343.8 |
| 1995 | 11.9 | 413 | 4.9 | 5.3 | | 435.1 |
| 1996 | 18.8 | 262 | 14.5 | 8.7 | | 304 |
| 1997 | 8.7 | 287 | 12 | 4.4 | | 312.1 |
| 1998 | 11.2 | 195 | 14.1 | 4.5 | | 224.8 |
| 1999 | | 242 | 13.9 | 3.6 | | 259.5 |
| 2000 | | 206 | 11 | 3 | | 220 |
| 2001 | 0.8 | 101 | 12 | 1.1 | | 115 |
| 2002 | 0.5 | 202 | 8.6 | 0.8 | | 211.9 |
| 2003 | 1.7 | 151 | 10 | 1.5 | | 164.1 |
| 2004 | 1 | 89 | 5.1 | 0.8 | | 95.9 |
| 2005 | 1.7 | 89 | 6.4 | 1.2 | | 98.3 |
| 2006 | 1.3 | 67 | 4.1 | 2.7 | | 75.2 |
| 2007 | 2.1 | 77 | 5.2 | 0.9 | | 85.2 |
| 2008 | 0.8 | 79 | 5.1 | 0.8 | | 85.7 |
| 2009 | 0.3 | | 3.7 | 1.4 | | 5.3 |
| 2010 | 1.3 | 41 | 6.5 | 2.4 | | 51.2 |
| 2011 | 2.3 | 31.3 | 5.2 | 1.1 | | 39.8 |
| 2012 | 2.8 | 34.3 | 5.3 | 0.8 | | 43.2 |
| 2013 | 5.9 | 33.6 | 7.2 | 1.1 | | 47.8 |
| 2014 | 12 | 35.3 | 11.3 | 1.2 | 0.4 | 60.3 |
| 2015 | 2.8 | 36.1 | 8.8 | 1.3 | 0.2 | 49.1 |
| 2016 | 4 | 46.4 | 6.6 | 0.4 | 0.1 | 57.5 |
| 2017 | 3.3 | 43.2 | 11.1 | 2.2 | 0.1 | 59.9 |
| 2018 | 4.2 | 53.4 | 4.5 | 1 | 0.2 | 63.4 |
| 2019 | 6.6 | 50 | 4.3 | 0.6 | 0.2 | 61.7 |
| 2020 | 3.4 | 47.8 | 6.3 | 0.9 | | 58.4 |
| 2021 | 0.1 | 46 | 4.5 | 1.2 | | 51.9 |
| 2022 | 1.1 | 53.4 | 4.7 | 0.9 | | 60.1 |
| 2023* | 0.9 | 48.6 | 3.6 | 0.5 | | 53.6 |

*Preliminary data

Table 5a European eel. Official commercial landings (tonnes) of yellow and silver eel (1908–2022) in Norway (NO), Sweden (SE), Finland (FI), Estonia (EE), Latvia (LV), Lithuania (LT), Poland (PL), Germany (DE), Denmark (DK), Netherlands* (NL), and Belgium (BE), combining information from the 2023 data call and the WGEEEL database. Empty cell = no data, data not collected, or data not pertinent.

| | NO | SE | FI | EE | LV | LT | PL | DE | DK | NL* | BE |
|------|-------|----|----|----|----|----|----|----|----|-----|----|
| 1908 | 268.1 | | | | | | | | | | |
| 1909 | 326.6 | | | | | | | | | | |
| 1910 | 303.1 | | | | | | | | | | |
| 1911 | 383.8 | | | | | | | | | | |
| 1912 | 187.3 | | | | | | | | | | |
| 1913 | 212.7 | | | | | | | | | | |

| | NO | SE | FI | EE | LV | LT | PL | DE | DK | NL* | BE |
|------|-----|--------|----|------|----|-----|-----|----|------|------|----|
| 1914 | 282 | 1460.6 | | | | | | | | | |
| 1915 | 143 | 996.9 | | | | | | | | | |
| 1916 | 117 | 1078.2 | | | | | | | | | |
| 1917 | 44 | 1283.6 | | | | | | | | | |
| 1918 | 35 | 884.4 | | | | | | | | | |
| 1919 | 64 | 1145.4 | | | | | | | | | |
| 1920 | 80 | 969.6 | | | | | | | 3413 | | |
| 1921 | 79 | 1072.4 | | | | | | | 3443 | | |
| 1922 | 94 | 925.9 | | | | | | | 3760 | | |
| 1923 | 140 | 947.7 | | | | | | | 3396 | | |
| 1924 | 290 | 1201.1 | | | | | | | 4130 | | |
| 1925 | 325 | 1714.2 | | | | | | | 4880 | | |
| 1926 | 341 | 1707.3 | | | | | | | 4726 | | |
| 1927 | 354 | 2011.5 | | | | | | | 4648 | | |
| 1928 | 325 | 1040.1 | | | | | | | 4117 | | |
| 1929 | 425 | 1393.7 | | | | | | | 4375 | | |
| 1930 | 450 | 1528.8 | | | | | | | 4773 | | |
| 1931 | 329 | 1794.8 | | | | | | | 4195 | | |
| 1932 | 518 | 1588.7 | | | | | | | 5088 | | |
| 1933 | 694 | 1494 | | | | | | | 5014 | | |
| 1934 | 674 | 1768.7 | | | | | | | 5171 | | |
| 1935 | 564 | 1950.9 | | | | | | | 4316 | | |
| 1936 | 631 | 1654.5 | | | | | | | 4332 | | |
| 1937 | 603 | 1725.1 | | | | | | | 4329 | | |
| 1938 | 526 | 1870.5 | | | | | | | 3849 | | |
| 1939 | 434 | 1774.4 | | | | | | | 4662 | | |
| 1940 | 143 | 1625.7 | | | | | | | 3709 | | |
| 1941 | 174 | 1821.8 | | | | | | | 3717 | | |
| 1942 | 131 | 1226.5 | | | | | | | 3140 | | |
| 1943 | 136 | 1827.8 | | | | | | | 3917 | | |
| 1944 | 150 | 2319.8 | | | | | | | 4245 | | |
| 1945 | 102 | 1906.1 | | | | | | | 4169 | 2668 | |
| 1946 | 167 | 1744.6 | | | | | | | 4269 | 3492 | |
| 1947 | 268 | 2346.8 | | | 10 | 8 | | | 4784 | 4502 | |
| 1948 | 293 | 2211.9 | | | 10 | 14 | | | 4386 | 4799 | |
| 1949 | 214 | 2329 | | | 50 | 21 | | | 4492 | 3873 | |
| 1950 | 282 | 2628 | | | 10 | 29 | | | 4500 | 4152 | |
| 1951 | 312 | 2311 | | | 10 | 32 | | | 4400 | 3661 | |
| 1952 | 178 | 1848 | | | 10 | 39 | | | 3900 | 3978 | |
| 1953 | 371 | 2756 | | | 20 | 80 | | | 4300 | 3157 | |
| 1954 | 327 | 2459 | | | 20 | 147 | 609 | | 3800 | 2085 | |
| 1955 | 451 | 3338 | | | 40 | 163 | 732 | | 4800 | 1651 | |
| 1956 | 293 | 1702 | | | 20 | 131 | 656 | | 3700 | 1817 | |
| 1957 | 430 | 2494 | | | 20 | 168 | 616 | | 3600 | 2509 | |
| 1958 | 437 | 2024 | | | 20 | 149 | 635 | | 3300 | 2674 | |
| 1959 | 409 | 3522 | | | 24 | 155 | 566 | | 4000 | 3413 | |
| 1960 | 430 | 1905 | | | 37 | 165 | 733 | | 4937 | 2999 | |
| 1961 | 449 | 2387 | | | 43 | 139 | 640 | | 4110 | 2452 | |
| 1962 | 356 | 2171 | | | 41 | 155 | 663 | | 4122 | 1443 | |
| 1963 | 503 | 2334 | | | 56 | 260 | 762 | | 4166 | 1618 | |
| 1964 | 440 | 2612 | | 3 | 37 | 225 | 884 | | 3505 | 2068 | |
| 1965 | 523 | 2051 | | 0.3 | 35 | 125 | 682 | | 3402 | 2268 | |
| 1966 | 510 | 2219 | | 1.9 | 33 | 238 | 804 | | 3901 | 2339 | |
| 1967 | 491 | 1835 | | 2.7 | 39 | 153 | 906 | | 3679 | 2524 | |
| 1968 | 569 | 2052 | | 2.9 | 28 | 165 | 943 | | 4476 | 2209 | |
| 1969 | 522 | 1922 | | 49 | 36 | 134 | 935 | | 3878 | 2389 | |
| 1970 | 422 | 1209 | | 61.5 | 29 | 118 | 847 | | 3558 | 1111 | |

| | NO | SE | FI | EE | LV | LT | PL | DE | DK | NL* | BE |
|------|------|--------|-----|-------|------|------|--------|--------|-------|-------|-----|
| 1971 | 415 | 1391 | | 59.5 | 29 | 124 | 722 | | 3378 | 853 | |
| 1972 | 422 | 1204 | | 73.4 | 25 | 126 | 696 | | 3429 | 857 | |
| 1973 | 409 | 1212 | | 69 | 27 | 120 | 644.7 | | 3656 | 823 | |
| 1974 | 368 | 1034 | | 51.1 | 20 | 86 | 691.1 | | 2977 | 840 | |
| 1975 | 407 | 1391 | | 82.1 | 19 | 114 | 809.7 | | 3485 | 1000 | |
| 1976 | 386 | 935 | | 71.6 | 24 | 88 | 760.5 | | 3054 | 1172 | |
| 1977 | 352 | 989 | | 65.8 | 16 | 68 | 867.8 | | 2502 | 783 | |
| 1978 | 347 | 1076 | | 63.2 | 18 | 70 | 910.4 | | 2492 | 719 | |
| 1979 | 374 | 954 | | 28.5 | 21 | 57 | 978.9 | | 1904 | 530 | |
| 1980 | 387 | 1112 | | 25.7 | 9 | 45 | 1214 | | 2288 | 664 | |
| 1981 | 369 | 887 | | 21.9 | 10 | 27 | 943.5 | | 2227 | 722 | |
| 1982 | 385 | 1161 | | 13.9 | 12 | 28 | 911.3 | | 2541 | 842 | |
| 1983 | 324 | 1212 | | 28.8 | 9 | 23 | 868 | | 2119 | 937 | |
| 1984 | 310 | 963 | | 72.2 | 12 | 27 | 819.4 | | 1871 | 691 | |
| 1985 | 352 | 1029 | | 75.1 | 18 | 29 | 1022.5 | 1096.7 | 1630 | 679 | |
| 1986 | 272 | 827.7 | | 61.1 | 19 | 32 | 920.7 | 1118.7 | 1672 | 721 | |
| 1987 | 282 | 699.4 | | 66.7 | 25 | 20 | 886.6 | 1031 | 1279 | 538 | |
| 1988 | 513 | 932.7 | | 109.7 | 15 | 23 | 943.3 | 1018 | 1878 | 425 | |
| 1989 | 313 | 902 | | 54.8 | 13 | 21 | 812.8 | 963.6 | 1696 | 526 | |
| 1990 | 336 | 916.2 | | 61.3 | 13 | 19 | 768.1 | 829.7 | 1675 | 472 | |
| 1991 | 323 | 1058.5 | | 52.4 | 14 | 16 | 669.7 | 724.7 | 1465 | 573 | |
| 1992 | 372 | 1152.5 | | 39.4 | 17 | 12 | 638.2 | 761.7 | 1451 | 548 | |
| 1993 | 340 | 1119.4 | | 59.2 | 19 | 10 | 568 | 790.1 | 1080 | 293 | |
| 1994 | 472 | 1262 | | 46.9 | 19 | 12 | 635.1 | 833.1 | 1200 | 330 | |
| 1995 | 454 | 948 | | 45.4 | 38 | 9.4 | 641.9 | 777.9 | 892 | 354 | |
| 1996 | 353 | 1053.3 | | 55.1 | 24 | 8.6 | 629 | 603 | 751.5 | 300 | |
| 1997 | 467 | 1065 | | 59.1 | 25 | 10.7 | 526 | 616.2 | 797 | 285 | |
| 1998 | 331 | 646.4 | | 44.2 | 30 | 17.1 | 544.4 | 566.9 | 597 | 323 | |
| 1999 | 447 | 701.6 | | 64.8 | 26 | 17.9 | 599.1 | 645.1 | 717 | 357 | |
| 2000 | 281 | 530.9 | | 67 | 13.7 | 22 | 443.6 | 591.2 | 628 | 370.1 | 2.9 |
| 2001 | 304 | 643.2 | | 67 | 17.4 | 23 | 434.5 | 569 | 707 | 439.5 | 2.9 |
| 2002 | 311 | 591.4 | | 49.9 | 9.6 | 25.6 | 372.9 | 543.9 | 614 | 370.2 | 2.9 |
| 2003 | 240 | 565.1 | | 48.6 | 10.3 | 23.5 | 365.5 | 497.9 | 648 | 309.8 | 2.9 |
| 2004 | 237 | 583.2 | | 39.2 | 11.3 | 32 | 337.2 | 475.3 | 546 | 310.2 | 2.9 |
| 2005 | 249 | 675.8 | | 30.7 | 10.3 | 44.6 | 219.9 | 454.8 | 534 | 255.2 | 2.9 |
| 2006 | 293 | 732.3 | | 33.4 | 7.9 | 31.6 | 184.4 | 472.2 | 596 | 240.3 | |
| 2007 | 194 | 702.5 | | 31.1 | 9.6 | 29.8 | 180.7 | 423.6 | 537 | 197 | |
| 2008 | 211 | 671.4 | 1 | 30.6 | 12.9 | 27 | 159.7 | 406.1 | 466 | 147.6 | |
| 2009 | 69 | 514.1 | 1.8 | 22.1 | 4.9 | 17.2 | 160.6 | 374.6 | 467 | 108 | |
| 2010 | 32 | 525.1 | 2.3 | 18.9 | 8.9 | 37.6 | 173.2 | 367.1 | 422 | 445 | |
| 2011 | 0 | 450.4 | 1.5 | 16.2 | 6 | 22.6 | 118.8 | 278.9 | 370 | 370.6 | |
| 2012 | 0 | 340 | 1.5 | 17.7 | 6.3 | 15.8 | 119.3 | 245.4 | 317 | 351.7 | |
| 2013 | 0 | 374.4 | 1.3 | 17.4 | 4.7 | 28.4 | 137.4 | 264.8 | 356 | 318.9 | |
| 2014 | 0 | 324.2 | 1 | 16.7 | 4.4 | 15.4 | 116.8 | 232.9 | 346 | 320.3 | |
| 2015 | 0 | 246.5 | 0.6 | 14.2 | 5.2 | 11.8 | 102.4 | 226.1 | 282 | 293 | |
| 2016 | 3 | 279.5 | 1.3 | 15.2 | 4.2 | 28.4 | 138.4 | 206.8 | 265 | 312.5 | |
| 2017 | 10.9 | 245 | 1.1 | 15.7 | 8.6 | 24.3 | 172.6 | 241.7 | 257.3 | 421.3 | 0 |
| 2018 | 3.4 | 251 | 1.1 | 18.3 | 5.8 | 20.3 | 146.5 | 226.9 | 181.8 | 476.9 | |
| 2019 | 4 | 188.2 | 0.4 | 21.7 | 6.1 | 4.6 | 167.5 | 209.1 | 183.3 | 484 | |
| 2020 | 4 | 194.4 | 0.4 | 38.8 | 6.7 | 6.8 | 103.6 | | 182.2 | 475.5 | |
| 2021 | 5 | 170.5 | 0.4 | 47.9 | 6.4 | 9.9 | 126.6 | | 232.8 | 523.7 | |
| 2022 | 4 | 114.6 | 0.3 | 1.6 | 6.1 | 11.6 | 115.3 | | 163.1 | 538.1 | |

* Landings from the Netherlands are incomplete before 2010.

Table 5b European eel. Official commercial landings (tonnes) of yellow and silver eel (1951–2022) in Ireland (IE), United Kingdom (GB), France (FR), Spain (ES), Portugal (PT), Italy (IT), and Slovenia (SL), combining information from the 2023 data call and the WGEEL database. Empty cell = no data, data not collected, or data not pertinent. No data before 1951 for any of the countries

| Year | IE | GB | FR | ES | PT | IT | SL |
|------|-----|-------|--------|-------|------|------|-----|
| 1951 | | | | 90 | | | |
| 1952 | | | | 102.2 | | | |
| 1953 | | | | 80.2 | | | |
| 1954 | | | | 97.7 | | | |
| 1955 | | | | 102.9 | | | |
| 1956 | | | | 106.1 | | | |
| 1957 | | | | 80 | | | |
| 1958 | | | | 115 | | | |
| 1959 | | | | 100 | | | |
| 1960 | | 771.7 | | 98 | | | |
| 1961 | | 768.4 | | 153.8 | | | |
| 1962 | | 696.1 | | 114.9 | | | |
| 1963 | | 787.8 | | 136.9 | | | |
| 1964 | | 548.9 | | 91.5 | | | |
| 1965 | | 783.8 | | 130.4 | | | |
| 1966 | | 881 | | 191.5 | | | |
| 1967 | | 568.7 | | 163.8 | | | |
| 1968 | | 585.6 | | 175.6 | | | |
| 1969 | | 605.6 | | 136.4 | | 2469 | |
| 1970 | 200 | 752.1 | | 119.4 | | 2300 | |
| 1971 | 200 | 842.2 | | 107.4 | | 2113 | |
| 1972 | 200 | 632.6 | | 119.4 | | 1997 | |
| 1973 | 91 | 723.2 | | 100.2 | | 588 | |
| 1974 | 67 | 765 | | 93.4 | | 2122 | |
| 1975 | 79 | 762.2 | | 78 | | 2886 | |
| 1976 | 150 | 621.7 | | 82.7 | | 2596 | |
| 1977 | 108 | 690.5 | | 79.9 | | 2390 | |
| 1978 | 76 | 823.6 | | 67 | | 2172 | |
| 1979 | 110 | 1045 | | 96.8 | | 2354 | |
| 1980 | 75 | 912.2 | | 89.8 | | 2198 | |
| 1981 | 94 | 907.1 | | 97.7 | | 2270 | |
| 1982 | 144 | 942.5 | | 19.9 | | 2025 | 0.8 |
| 1983 | 117 | 866.4 | | 18.4 | | 2013 | 0.7 |
| 1984 | 88 | 973.4 | | 11 | | 2050 | 1.2 |
| 1985 | 87 | 750 | | 16.5 | | 2135 | 2.5 |
| 1986 | 87 | 650.8 | 1944 | 13.4 | | 2134 | 2.7 |
| 1987 | 230 | 684.1 | 2062 | 21.2 | | 2265 | 1.6 |
| 1988 | 215 | 933.6 | 2265 | 13.9 | | 2027 | 1.5 |
| 1989 | 400 | 874.7 | 1746 | 5.3 | 13.5 | 1243 | 1.3 |
| 1990 | 256 | 783.9 | 1778 | 8.7 | 13 | 1088 | 1.9 |
| 1991 | 245 | 736.9 | 1645 | 49.8 | 23.5 | 1097 | 1.4 |
| 1992 | 234 | 715.4 | 1321 | 54.3 | 29.7 | 1084 | 0.1 |
| 1993 | 260 | 670.7 | 1280 | 66.5 | 33.9 | 782 | 0.1 |
| 1994 | 300 | 777.8 | 1280 | 50.7 | 26.6 | 771 | 0.7 |
| 1995 | | 899.6 | 1280 | 69.4 | 23.7 | 1047 | 0 |
| 1996 | | 805.2 | 1280 | 61.7 | 25.6 | 953 | 0 |
| 1997 | | 730.7 | 1223 | 61.5 | 24.7 | 727 | 0 |
| 1998 | | 693.4 | 1150 | 43.6 | 23.3 | 666 | 0 |
| 1999 | 250 | 667.8 | 1005 | 48.3 | 23.1 | 634 | |
| 2000 | 250 | 587.2 | 1008.8 | 55.3 | 21.8 | 588 | 0 |
| 2001 | 98 | 582.7 | 1024.1 | 130.2 | 15 | 520 | 0 |
| 2002 | 123 | 551.1 | 30.4 | 105.6 | 26.9 | 415 | 0 |
| 2003 | 111 | 552.3 | 21.4 | 95.6 | 10.6 | 446 | |

| Year | IE | GB | FR | ES | PT | IT | SL |
|------|-------|-------|-------|-------|------|-------|----|
| 2004 | 136 | 471.7 | 12.5 | 85.3 | 8.8 | 379 | |
| 2005 | 101 | 477.2 | 7.8 | 88 | 7 | 75 | 0 |
| 2006 | 133 | 383.5 | 15 | 115.6 | 10.1 | 56 | 0 |
| 2007 | 114 | 450.4 | 26.1 | 82.1 | 10.5 | 277 | 0 |
| 2008 | 108.3 | 400.6 | 31.4 | 65.6 | 7 | 56 | 0 |
| 2009 | 0 | 462.4 | 42 | 89.2 | 8.2 | 329.9 | 0 |
| 2010 | 0 | 461.1 | 20.2 | 104.6 | 11 | 265.1 | 0 |
| 2011 | 0 | 455.9 | 368 | 93.6 | 5.9 | 189.7 | 0 |
| 2012 | 0 | 415.1 | 472.6 | 121.6 | 3.8 | 182.4 | 0 |
| 2013 | 0 | 426.5 | 504.1 | 132.7 | 2.7 | 172.2 | 0 |
| 2014 | 0 | 392.8 | 434.4 | 130.4 | 3.3 | 184.6 | 0 |
| 2015 | 0 | 341 | 356.9 | 92 | 2.9 | 170.3 | 0 |
| 2016 | 0 | 347.2 | 442.6 | 115.1 | 2.4 | 205 | 0 |
| 2017 | 0 | 321.8 | 434.1 | 98.2 | 1.5 | 213.8 | |
| 2018 | 0 | 366.9 | 617.4 | 57.8 | 3.6 | 123.5 | |
| 2019 | 0 | 295.6 | 312.7 | 58 | 1.9 | 126.6 | |
| 2020 | 0 | 182.2 | 347.9 | 81.8 | 3.2 | 89.5 | |
| 2021 | 0 | 244 | 293.6 | 69.6 | 2.4 | 50 | |
| 2022 | 0 | 166.7 | 265.4 | 66.1 | 1.7 | 95.7 | |

Table 5c European eel. Official commercial landings (tonnes) of yellow and silver eel (1908–2022) in Croatia (HR), Albania (AL) Greece (GR), Turkey (TR), Libya (LY), Tunisia (TN), Algeria (DZ), and Morocco (MA), combining information from the 2023 data call and the WGEEL database. Empty cell = no data, data not collected, or data not pertinent. The total column is the yearly sum for all countries included in tables 5a, 5b, and 5c and not just the countries listed in this particular table.

| Year | HR | AL | GR | TR | LY | TN | DZ | MA | Total |
|------|----|----|----|----|----|----|----|----|--------|
| 1908 | | | | | | | | | 268.1 |
| 1909 | | | | | | | | | 326.6 |
| 1910 | | | | | | | | | 303.1 |
| 1911 | | | | | | | | | 383.8 |
| 1912 | | | | | | | | | 187.3 |
| 1913 | | | | | | | | | 212.7 |
| 1914 | | | | | | | | | 1742.6 |
| 1915 | | | | | | | | | 1139.9 |
| 1916 | | | | | | | | | 1195.2 |
| 1917 | | | | | | | | | 1327.6 |
| 1918 | | | | | | | | | 919.4 |
| 1919 | | | | | | | | | 1209.4 |
| 1920 | | | | | | | | | 4462.6 |
| 1921 | | | | | | | | | 4594.4 |
| 1922 | | | | | | | | | 4779.9 |
| 1923 | | | | | | | | | 4483.7 |
| 1924 | | | | | | | | | 5621.1 |
| 1925 | | | | | | | | | 6919.2 |
| 1926 | | | | | | | | | 6774.3 |
| 1927 | | | | | | | | | 7013.5 |
| 1928 | | | | | | | | | 5482.1 |
| 1929 | | | | | | | | | 6193.7 |
| 1930 | | | | | | | | | 6751.8 |
| 1931 | | | | | | | | | 6318.8 |
| 1932 | | | | | | | | | 7194.7 |
| 1933 | | | | | | | | | 7202 |
| 1934 | | | | | | | | | 7613.7 |
| 1935 | | | | | | | | | 6830.9 |
| 1936 | | | | | | | | | 6617.5 |
| 1937 | | | | | | | | | 6657.1 |
| 1938 | | | | | | | | | 6245.5 |

| Year | HR | AL | GR | TR | LY | TN | DZ | MA | Total |
|------|----|----|-------|-----|----|----|----|----|---------|
| 1939 | | | | | | | | | 6870.4 |
| 1940 | | | | | | | | | 5477.7 |
| 1941 | | | | | | | | | 5712.8 |
| 1942 | | | | | | | | | 4497.5 |
| 1943 | | | | | | | | | 5880.8 |
| 1944 | | | | | | | | | 6714.8 |
| 1945 | | | | | | | | | 8845.1 |
| 1946 | | | | | | | | | 9672.6 |
| 1947 | | | | | | | | | 11918.8 |
| 1948 | | | | | | | | | 11713.9 |
| 1949 | | | | | | | | | 10979 |
| 1950 | | | | | | | | | 11601 |
| 1951 | | | | | | | | | 10816 |
| 1952 | | | | | | | | | 10055.2 |
| 1953 | | | | | | | | | 10764.2 |
| 1954 | | | | | | | | | 9544.7 |
| 1955 | | | | | | | | | 11277.9 |
| 1956 | | | | | | | | | 8425.1 |
| 1957 | | | | | | | | | 9917 |
| 1958 | | | | | | | | | 9354 |
| 1959 | | | | | | | | | 12189 |
| 1960 | | | | | | | | | 12075.7 |
| 1961 | | | | | | | | | 11142.2 |
| 1962 | | | | | | | | | 9762 |
| 1963 | | | | | | | | | 10623.7 |
| 1964 | | | | | | | | | 10414.4 |
| 1965 | | | | | | | | | 10000.5 |
| 1966 | | | 14.9 | | | | | | 11133.3 |
| 1967 | | | 19 | | | | | | 10381.2 |
| 1968 | | | 4.9 | | | | | | 11211 |
| 1969 | | | 2.9 | 342 | | | | | 13420.9 |
| 1970 | | | 0 | 441 | | | | | 11168 |
| 1971 | | | 0 | 460 | | | | | 10694.1 |
| 1972 | | | 4.3 | 220 | | | | | 10005.7 |
| 1973 | | | 15.5 | 315 | | | | | 8793.6 |
| 1974 | | | 129.8 | 588 | | | | | 9832.4 |
| 1975 | | | 133.8 | 448 | | | | | 11694.8 |
| 1976 | | | 158.7 | 499 | | | | | 10599.2 |
| 1977 | | | 89.2 | 282 | | | | | 9283.2 |
| 1978 | | | 225.3 | 283 | | | | | 9342.5 |
| 1979 | | | 185.5 | 396 | | | | | 9034.7 |
| 1980 | | | 226.9 | 224 | | | | | 9470.6 |
| 1981 | | | 250.6 | 374 | | | | | 9200.8 |
| 1982 | | | 255.2 | 424 | | | | | 9705.6 |
| 1983 | | | 200.8 | 588 | | | | | 9325.1 |
| 1984 | | | 285.4 | 616 | | | | | 8790.6 |
| 1985 | | | 189.6 | 583 | | | | | 9694.9 |
| 1986 | | | 151.6 | 517 | | | | | 11144.7 |
| 1987 | | | 266.3 | 543 | | | | | 10900.9 |
| 1988 | | | 268.1 | 756 | | | | | 12337.8 |
| 1989 | | | 155.6 | 472 | | | | | 10213.6 |
| 1990 | | | 194.2 | 230 | | | | | 9444 |
| 1991 | | | 209.4 | 262 | | | | | 9166.3 |
| 1992 | | | 184.8 | 245 | | | | | 8860.1 |
| 1993 | | | 181.9 | 261 | | | | | 7814.8 |
| 1994 | | | 200.5 | 329 | | | | | 8546.4 |
| 1995 | | | 201.4 | 390 | | | | | 8071.7 |

| Year | HR | AL | GR | TR | LY | TN | DZ | MA | Total |
|------|-----|----|-------|-------|-----|-------|------|----|--------|
| 1996 | | | 151.3 | 342 | | | | | 7396.3 |
| 1997 | | | 136.5 | 400 | | | | | 7154.4 |
| 1998 | | | 87.6 | 300 | | | | | 6063.9 |
| 1999 | | | 80.7 | 200 | | | 20.4 | | 6504.8 |
| 2000 | | | 88.1 | 176 | | 109.9 | 17.2 | | 5852.7 |
| 2001 | | | 93.4 | 122 | | 144.1 | 44.5 | | 5981.5 |
| 2002 | | | 136.3 | 147 | | 204.4 | 25.4 | | 4656.5 |
| 2003 | | | 76.5 | 158 | | 171.7 | 25.2 | | 4379.9 |
| 2004 | | | 58.1 | 165 | | 132.5 | 29 | | 4052.2 |
| 2005 | | | 116.1 | 176 | | 197 | 7.6 | | 3729.9 |
| 2006 | | | 77.1 | 162 | | 266.3 | 2.7 | | 3812.4 |
| 2007 | | | 89.7 | 179 | | 296.5 | 14.6 | | 3845.2 |
| 2008 | | | 71.1 | 171 | | 316.7 | 13.9 | | 3374.9 |
| 2009 | | | 78.5 | 158 | | 122.2 | 14.2 | | 3043.9 |
| 2010 | | | 58.6 | 182 | | 92.6 | 3.4 | | 3230.7 |
| 2011 | | | 83.2 | 28.3 | | 79.6 | | | 2939.2 |
| 2012 | | | 55.2 | 38 | | 55 | 0.4 | | 2758.8 |
| 2013 | | 47 | 38 | 48.2 | | 149.6 | 3 | 23 | 3050.3 |
| 2014 | 0.5 | 43 | 58.3 | 56 | | 83.6 | 6 | 23 | 2793.6 |
| 2015 | 0.1 | 50 | 60.2 | 71 | | 81.4 | 3 | 4 | 2414.6 |
| 2016 | 0.6 | 41 | 60.9 | 75 | | 250.4 | 2 | 7 | 2803.5 |
| 2017 | 0.6 | 47 | 48.3 | 81 | | 153 | 10.6 | 2 | 2810.4 |
| 2018 | 0.6 | 60 | 42.8 | 111 | | 166.3 | 33 | 2 | 2916.9 |
| 2019 | 0.4 | 70 | 20.4 | 330 | 1.3 | 107 | 25.2 | | 2618 |
| 2020 | 0.4 | 40 | 27.9 | 232.8 | 1.9 | 129.9 | 18 | | 2167.9 |
| 2021 | 0.4 | 22 | 19.2 | 267.3 | 0.2 | 105.3 | 4.7 | | 2201.9 |
| 2022 | 0.3 | 17 | 17.5 | 275.8 | 2.1 | 105 | | | 1968 |

Table 6 European eel. Recreational landings (tonnes) of glass eel (1978–2023) in countries where fisheries exist, i.e. France (FR) and Spain (ES), combining information from the 2023 data call and the WGEEL database. Empty cell = no data, data not collected, or data not pertinent.

| Year | FR | ES | Total |
|------|----|------|-------|
| 1978 | | 647 | 647 |
| 1979 | | 697 | 697 |
| 1980 | | 1303 | 1303 |
| 1981 | | 904 | 904 |
| 1982 | | 219 | 219 |
| 1983 | | 161 | 161 |
| 1984 | | 156 | 156 |
| 1985 | | 71 | 71 |
| 1986 | | 87 | 87 |
| 1987 | | 172 | 172 |
| 1988 | | 40 | 40 |
| 1989 | | 110 | 110 |
| 1990 | | 54 | 54 |
| 1991 | | 87 | 87 |
| 1992 | | 77 | 77 |
| 1993 | | 130 | 130 |
| 1994 | | 74 | 74 |
| 1995 | | 113 | 113 |
| 1996 | | 25 | 25 |
| 1997 | | 39 | 39 |
| 1998 | | 6 | 6 |
| 1999 | | 6 | 6 |
| 2000 | | 2 | 2 |
| 2001 | | 1 | 1 |
| 2002 | | 37 | 37 |

| Year | FR | ES | Total |
|-------|----|-----|-------|
| 2004 | | 0.9 | 0.9 |
| 2005 | 0 | 1.2 | 1.2 |
| 2006 | 1 | 1.7 | 2.7 |
| 2007 | 0 | 1.3 | 1.3 |
| 2008 | 0 | 1.6 | 1.6 |
| 2009 | 0 | 0.4 | 0.4 |
| 2010 | 0 | 0.8 | 0.8 |
| 2011 | 0 | 0.4 | 0.4 |
| 2012 | 0 | 1.1 | 1.1 |
| 2013 | 0 | 1.6 | 1.6 |
| 2014 | 0 | 2.4 | 2.4 |
| 2015 | 0 | 2.3 | 2.3 |
| 2016 | 0 | 1.7 | 1.7 |
| 2017 | 0 | 1.5 | 1.5 |
| 2018 | 0 | 1.7 | 1.7 |
| 2019 | 0 | 0.9 | 0.9 |
| 2020 | 0 | 0.7 | 0.7 |
| 2022 | | 0.7 | 0.7 |
| 2023* | | 1.3 | 1.3 |

* Preliminary data

Table 7a European eel. Recreational landings (tonnes) of yellow and silver eel (1980–2023) in Finland (FI), Estonia (EE), Latvia (LV), Lithuania (LT), Poland (PL), Czechia (CZ), Germany (DE), Denmark (DK), Netherlands (NL), Belgium (BE), and Ireland (IE), combining information from the 2023 data call and the WGEEL database. Countries omitted in tables 7a and 7b include those where recreational landings are prohibited and those that have not reported.

| Year | FI | EE | LV | LT | PL | CZ | DE | DK | NL | BE | IE |
|------|----|----|----|----|----|----|-----|-----|-----|----|----|
| 1980 | | | | | | | | | | | |
| 1981 | | | | | | | | | | | |
| 1982 | | | | | | | | | | | |
| 1983 | | | | | | | | | | | |
| 1984 | | | | | | | | | | | |
| 1985 | | | | | | | 582 | | | | |
| 1986 | | | | | | | 563 | | | | |
| 1987 | | | | | | | 546 | | | | |
| 1988 | | | | | | | 559 | | | | |
| 1989 | | | | | | | 543 | | | | |
| 1990 | | | | | | | 501 | | | | |
| 1991 | | | | | | | 498 | | | | |
| 1992 | | | | | | | 489 | | | | |
| 1993 | | | | | | | 486 | | | | |
| 1994 | | | | | | | 493 | | | | |
| 1995 | | | | | | | 452 | | | | |
| 1996 | | | | | | | 416 | | | | |
| 1997 | | | | | | | 424 | | | | |
| 1998 | | | | | | | 431 | | | | |
| 1999 | | | | | | | 425 | | | | |
| 2000 | | | 2 | | | | 429 | | | 34 | |
| 2001 | | | 1 | | | | 426 | | | 34 | |
| 2002 | | | 1 | | | | 417 | | | 34 | |
| 2003 | | | 0 | | | | 428 | | | 34 | |
| 2004 | | | 1 | | | | 414 | | | 34 | |
| 2005 | | 2 | 3 | | | | 398 | | | 34 | |
| 2006 | | 1 | 0 | | | | 399 | | | 34 | |
| 2007 | | 1 | 0 | | | | 375 | | | 34 | |
| 2008 | 17 | 1 | 0 | | | | 326 | | | 34 | |
| 2009 | | 1 | 1 | | | | 310 | 108 | | 34 | |
| 2010 | 10 | 1 | 0 | | | | 277 | 126 | 111 | 30 | |

| Year | FI | EE | LV | LT | PL | CZ | DE | DK | NL | BE | IE |
|------|----|----|----|----|----|----|-----|------|----|----|----|
| 2011 | | 1 | 0 | | | | 272 | 79.5 | | 30 | |
| 2012 | 5 | 1 | 0 | 1 | 32 | 17 | 263 | 52.3 | 59 | 30 | |
| 2013 | | 1 | 1 | 3 | 27 | 15 | 265 | 50.3 | | 30 | |
| 2014 | 20 | 1 | 1 | 2 | 30 | 19 | 270 | 57 | 70 | 30 | |
| 2015 | | 1 | 1 | 5 | 27 | 12 | 271 | 118 | | 30 | |
| 2016 | 8 | 1 | 0 | 2 | 34 | 12 | 275 | 164 | 24 | 30 | |
| 2017 | | 1 | 1 | 3 | 40 | 17 | 276 | 117 | | 30 | |
| 2018 | 2 | 1 | 0 | 1 | 45 | 12 | 271 | 105 | 24 | 30 | |
| 2019 | | 1 | 0 | 6 | 42 | 12 | 276 | 110 | | 30 | |
| 2020 | 2 | 1 | 1 | 1 | 50 | | | 98.9 | 24 | 30 | |
| 2021 | | 1 | 0 | 7 | 65 | | | 79 | | 30 | |
| 2022 | | 0 | 0 | | 26 | | | 160 | 16 | | 0 |

* Preliminary data

Table 7b European eel. Recreational landings (tonnes) of yellow and silver eel (1980–2023) in France (FR), Spain (ES), Italy (IT), Slovenia (SL), and Turkey (TR), combining information from the 2023 data call and the WGEEL database. Countries omitted in tables 7a and 7b include those where recreational landings are prohibited and those that have not reported. Empty cell = no data, data not collected, or data not pertinent.

| Year | FR | ES | IT | SL | HR | TR | LY | Total |
|------|-------|-----|-------|-----|------|----|----|--------|
| 1980 | | | | 0 | | | | 0 |
| 1981 | | | | 0 | | | | 0 |
| 1982 | | | | 0 | | | | 0 |
| 1983 | | | | 0 | | | | 0 |
| 1984 | | | | 0 | | | | 0 |
| 1985 | | | | 0 | | | | 581.6 |
| 1986 | | | | 0.1 | | | | 562.9 |
| 1987 | | | | 0.1 | | | | 546.4 |
| 1988 | | | | 0.1 | | | | 558.6 |
| 1989 | | | | 0.1 | | | | 542.6 |
| 1990 | | | | 0.1 | | | | 501.4 |
| 1991 | | | | 0.1 | | | | 498.2 |
| 1992 | | | | 0.1 | | | | 488.6 |
| 1993 | | | | 0.1 | | | | 485.7 |
| 1994 | | | | 0 | | | | 492.9 |
| 1995 | | | | 0 | | | | 452.2 |
| 1996 | | | | 0.1 | | | | 416.4 |
| 1997 | | | | 0.2 | | | | 423.9 |
| 1998 | | | | 0.1 | | | | 430.6 |
| 1999 | | | | 0 | | | | 424.8 |
| 2000 | 20.9 | | | 0 | | | | 485.1 |
| 2001 | 19.9 | | | 0 | | | | 480.6 |
| 2002 | 19 | | | 0 | | | | 471 |
| 2003 | 14.7 | | | 0 | | | | 476.6 |
| 2004 | 16.8 | | | 0 | | | | 465 |
| 2005 | 12.9 | | | 0 | | | | 448.9 |
| 2006 | 683.9 | | | 0 | | | | 1117.9 |
| 2007 | 14.6 | | | 0 | | | | 424.9 |
| 2008 | 14.9 | | | 0 | | | | 393.2 |
| 2009 | 7.1 | | | 0 | | | | 460.6 |
| 2010 | 4.9 | | 149.5 | 0 | | | | 709 |
| 2011 | 3.2 | | 60.6 | 0 | | | | 446.5 |
| 2012 | 4.6 | | 73.6 | 0 | | | | 539 |
| 2013 | 4.7 | 1 | 69.7 | 0 | | | | 467.3 |
| 2014 | 4.3 | 1 | 69.8 | 0 | | | | 573.3 |
| 2015 | 3.5 | 1 | 60.2 | 0 | 10.1 | | | 538.2 |
| 2016 | 3.1 | 0.8 | 56.8 | 0 | 8.9 | | | 619 |
| 2017 | 2.9 | 0.1 | 41.3 | | 7.6 | | | 535.1 |

| Year | FR | ES | IT | SL | HR | TR | LY | Total |
|-------|-----|-----|------|----|-----|------|-----|-------|
| 2018 | 3.3 | 0.9 | 42.3 | | 6.8 | | | 543.3 |
| 2019 | 3.2 | 2.2 | 33.7 | | 5.7 | | 0.1 | 521.9 |
| 2020 | 1.5 | | 24.5 | | 5 | 87.2 | 0.1 | 325.5 |
| 2021 | 1.8 | | 12.6 | | 1.9 | 41.7 | 0 | 239.6 |
| 2022 | 1.3 | | 17.1 | | 1.9 | 24.2 | | 247 |
| 2023* | | | | | | | 0.1 | 0.1 |

* Preliminary data

Summary of the assessment

Table 8 European eel. Recruitment indices: geometric means (“Value”) of estimated (GLM) recruitment for glass eel, with 95% prediction intervals (“Lower” and “Upper”) in the continental “North Sea” and “Elsewhere Europe”, and recruitment of yellow eel in Europe. The glass eel GLM (predicting recruitment as a function of area, year, and site) was fitted to 57 time-series, comprising either pure glass eel or a mixture of glass eels and yellow eels and scaled to the 1960–1979 geometric mean so that values correspond to the recruitment as a percentage of the 1960–1979 geometric mean. The yellow eel GLM (predicting recruitment as a function of year and site) was fitted to 22 yellow eel time-series and scaled to the 1960–1979 geometric mean so that values correspond to the recruitment as a percentage of the 1960–1979 geometric mean. These indices are updated on an annual basis and, as they are presented in relative terms, may change the historical values.

| Year | Elsewhere Europe index (%) | | | North Sea index (%) | | | Yellow eel Europe index (%) | | |
|------|----------------------------|-------|-------|---------------------|-------|-------|-----------------------------|-------|--------|
| | Lower | Value | Upper | Lower | Value | Upper | Lower | Value | Upper |
| 1950 | | | | | | | 48.2 | 179.1 | 665.5 |
| 1951 | | | | | | | 75.3 | 254.3 | 858.6 |
| 1952 | | | | | | | 73.2 | 247.3 | 834.9 |
| 1953 | | | | | | | 115.6 | 390.2 | 1317.7 |
| 1954 | | | | | | | 57.2 | 193.3 | 652.6 |
| 1955 | | | | | | | 88.3 | 298.3 | 1007.4 |
| 1956 | | | | | | | 39.4 | 133.0 | 449.0 |
| 1957 | | | | | | | 45.5 | 153.7 | 518.9 |
| 1958 | | | | | | | 45.1 | 152.3 | 514.3 |
| 1959 | | | | | | | 97.1 | 327.8 | 1107.1 |
| 1960 | 63.0 | 153.5 | 373.8 | 52.3 | 207.6 | 823.5 | 51.9 | 163.7 | 516.7 |
| 1961 | 62.7 | 132.1 | 278.0 | 29.3 | 116.4 | 461.6 | 56.7 | 179.1 | 565.3 |
| 1962 | 75.2 | 151.3 | 304.3 | 44.8 | 177.7 | 704.7 | 55.7 | 175.8 | 555.0 |
| 1963 | 96.9 | 194.8 | 391.7 | 56.1 | 222.7 | 883.2 | 47.2 | 149.1 | 470.7 |
| 1964 | 50.0 | 121.8 | 296.7 | 35.2 | 116.0 | 381.6 | 19.2 | 60.7 | 191.6 |
| 1965 | 67.3 | 135.3 | 272.0 | 23.3 | 76.7 | 252.6 | 36.1 | 113.9 | 359.4 |
| 1966 | 40.9 | 75.8 | 140.4 | 26.4 | 87.0 | 286.3 | 48.4 | 152.7 | 481.9 |
| 1967 | 43.7 | 80.9 | 149.8 | 29.1 | 95.8 | 315.2 | 37.5 | 112.4 | 336.9 |
| 1968 | 69.4 | 128.4 | 237.7 | 37.2 | 122.6 | 403.3 | 58.1 | 174.2 | 522.3 |
| 1969 | 36.4 | 67.4 | 124.8 | 29.8 | 88.3 | 261.7 | 38.9 | 116.5 | 349.2 |
| 1970 | 54.8 | 101.5 | 187.9 | 32.5 | 96.4 | 285.8 | 20.1 | 60.2 | 180.5 |
| 1971 | 30.7 | 55.4 | 100.0 | 28.3 | 84.3 | 250.8 | 20.9 | 62.6 | 187.7 |
| 1972 | 28.3 | 50.0 | 88.4 | 38.9 | 108.0 | 299.6 | 34.3 | 108.3 | 341.9 |
| 1973 | 31.3 | 55.3 | 97.7 | 17.6 | 46.5 | 122.8 | 45.1 | 135.2 | 405.4 |
| 1974 | 47.6 | 82.6 | 143.4 | 46.7 | 129.5 | 359.4 | 21.8 | 65.4 | 196.2 |
| 1975 | 42.3 | 71.2 | 119.9 | 20.9 | 53.3 | 136.0 | 41.0 | 122.9 | 368.6 |
| 1976 | 69.0 | 116.2 | 195.7 | 39.1 | 96.9 | 240.4 | 12.6 | 37.7 | 113.0 |
| 1977 | 66.1 | 114.2 | 197.3 | 30.3 | 77.5 | 197.8 | 26.3 | 78.9 | 236.5 |
| 1978 | 63.4 | 109.4 | 189.0 | 23.5 | 60.0 | 153.1 | 23.3 | 69.9 | 209.7 |
| 1979 | 85.6 | 144.1 | 242.8 | 42.5 | 102.9 | 249.6 | 19.5 | 58.6 | 175.6 |
| 1980 | 67.7 | 112.7 | 187.4 | 34.0 | 84.4 | 209.3 | 34.6 | 99.8 | 287.5 |
| 1981 | 51.9 | 88.3 | 150.3 | 25.8 | 61.3 | 145.9 | 14.5 | 41.7 | 120.1 |
| 1982 | 54.8 | 90.9 | 151.0 | 12.9 | 31.2 | 75.6 | 18.2 | 52.3 | 150.8 |
| 1983 | 28.9 | 48.6 | 81.7 | 10.6 | 25.6 | 62.1 | 16.4 | 47.2 | 136.1 |
| 1984 | 32.1 | 53.9 | 90.6 | 4.1 | 9.8 | 23.3 | 12.2 | 35.3 | 101.6 |

| Year | Elsewhere Europe index (%) | | | North Sea index (%) | | | Yellow eel Europe index (%) | | |
|-------|----------------------------|-------|-------|---------------------|-------|-------|-----------------------------|-------|-------|
| | Lower | Value | Upper | Lower | Value | Upper | Lower | Value | Upper |
| 1985 | 32.0 | 52.1 | 84.9 | 3.4 | 8.1 | 19.2 | 23.1 | 66.5 | 191.3 |
| 1986 | 20.5 | 33.7 | 55.4 | 3.3 | 7.9 | 18.7 | 18.0 | 50.2 | 139.9 |
| 1987 | 36.2 | 58.4 | 94.4 | 4.0 | 9.7 | 23.5 | 17.0 | 47.5 | 132.4 |
| 1988 | 42.1 | 68.7 | 111.9 | 3.8 | 8.9 | 20.8 | 22.1 | 61.5 | 171.5 |
| 1989 | 26.7 | 43.6 | 71.0 | 1.7 | 4.0 | 9.4 | 12.3 | 36.9 | 110.4 |
| 1990 | 21.6 | 35.2 | 57.3 | 5.9 | 14.0 | 33.1 | 11.3 | 32.5 | 93.5 |
| 1991 | 10.5 | 17.3 | 28.5 | 1.3 | 3.1 | 7.4 | 12.5 | 37.5 | 112.2 |
| 1992 | 13.4 | 22.0 | 36.1 | 3.1 | 7.1 | 16.6 | 6.3 | 17.6 | 49.1 |
| 1993 | 14.8 | 24.1 | 39.2 | 2.7 | 6.4 | 14.8 | 5.1 | 14.1 | 39.2 |
| 1994 | 14.8 | 23.5 | 37.3 | 2.7 | 6.3 | 14.6 | 19.7 | 54.8 | 152.5 |
| 1995 | 19.3 | 31.0 | 49.6 | 1.9 | 4.4 | 10.4 | 4.7 | 13.4 | 38.5 |
| 1996 | 15.4 | 24.6 | 39.0 | 2.0 | 4.6 | 10.6 | 3.6 | 10.1 | 28.1 |
| 1997 | 25.7 | 40.5 | 64.0 | 1.7 | 4.0 | 9.3 | 8.1 | 21.5 | 57.1 |
| 1998 | 10.2 | 16.1 | 25.4 | 1.2 | 2.7 | 6.3 | 6.3 | 17.1 | 46.2 |
| 1999 | 12.6 | 20.1 | 32.2 | 2.3 | 5.5 | 13.1 | 7.9 | 21.3 | 57.7 |
| 2000 | 11.9 | 19.0 | 30.2 | 1.8 | 4.3 | 10.0 | 6.2 | 17.4 | 48.3 |
| 2001 | 5.3 | 8.4 | 13.1 | 0.4 | 0.9 | 2.0 | 6.5 | 17.5 | 47.4 |
| 2002 | 8.2 | 12.9 | 20.4 | 1.0 | 2.3 | 5.4 | 14.0 | 37.2 | 98.6 |
| 2003 | 8.0 | 12.5 | 19.6 | 0.7 | 1.7 | 4.1 | 9.4 | 24.4 | 63.5 |
| 2004 | 4.5 | 7.1 | 11.2 | 0.3 | 0.6 | 1.4 | 9.6 | 24.9 | 64.8 |
| 2005 | 4.9 | 7.7 | 12.1 | 0.4 | 1.0 | 2.3 | 5.2 | 13.0 | 32.8 |
| 2006 | 3.6 | 5.6 | 8.7 | 0.2 | 0.5 | 1.0 | 6.7 | 16.9 | 42.6 |
| 2007 | 4.1 | 6.4 | 9.9 | 0.5 | 1.2 | 2.6 | 7.9 | 20.1 | 51.2 |
| 2008 | 3.6 | 5.6 | 8.8 | 0.5 | 1.1 | 2.4 | 5.7 | 13.9 | 34.2 |
| 2009 | 2.6 | 4.3 | 7.0 | 0.4 | 0.8 | 1.7 | 3.1 | 7.7 | 19.1 |
| 2010 | 2.9 | 4.6 | 7.5 | 0.3 | 0.7 | 1.5 | 5.1 | 12.8 | 31.7 |
| 2011 | 2.3 | 3.7 | 6.0 | 0.2 | 0.5 | 1.0 | 9.6 | 23.9 | 59.2 |
| 2012 | 3.1 | 5.0 | 8.1 | 0.2 | 0.5 | 1.0 | 6.2 | 14.4 | 33.2 |
| 2013 | 4.6 | 7.3 | 11.6 | 0.8 | 1.7 | 3.6 | 6.4 | 14.7 | 33.8 |
| 2014 | 7.2 | 11.3 | 18.0 | 1.1 | 2.4 | 5.1 | 11.9 | 28.0 | 66.1 |
| 2015 | 4.3 | 6.8 | 10.7 | 0.4 | 0.8 | 1.8 | 5.3 | 12.0 | 27.5 |
| 2016 | 6.3 | 10.0 | 15.9 | 0.8 | 1.6 | 3.5 | 6.8 | 15.7 | 36.3 |
| 2017 | 6.6 | 10.7 | 17.1 | 0.5 | 1.1 | 2.2 | 7.3 | 16.7 | 38.7 |
| 2018 | 5.9 | 9.7 | 15.8 | 0.8 | 1.7 | 3.5 | 7.7 | 17.9 | 41.7 |
| 2019 | 3.7 | 5.9 | 9.5 | 0.6 | 1.3 | 2.7 | 6.0 | 13.9 | 32.3 |
| 2020 | 4.9 | 7.9 | 12.6 | 0.4 | 0.8 | 1.7 | 6.2 | 14.9 | 36.0 |
| 2021 | 3.7 | 6.0 | 9.7 | 0.3 | 0.6 | 1.3 | 5.1 | 12.1 | 28.5 |
| 2022 | 7.0 | 11.3 | 18.3 | 0.4 | 0.7 | 1.6 | 3.8 | 8.9 | 20.9 |
| 2023* | 5.4 | 8.8 | 14.4 | 0.2 | 0.4 | 0.6 | | | |

Figures in the table are rounded

* Preliminary data

Sources and references

Convention on the Conservation of Migratory Species of Wild Animals (CMS). 2018. Appendices I and II of the Convention on the Conservation of Migratory Species of Wild Animals. https://www.cms.int/sites/default/files/basic_page_documents/appendices_cop13_e_0.pdf

Convention on International Trade in Endangered Species of Wild Fauna and Flora (CITES). 2007. Fourteenth meeting of the Conference of the Parties, The Hague, the Netherlands, 3–15 June. Cop14 Com. I Rep. 10 (Rev. 1).

Convention on International Trade in Endangered Species of Wild Fauna and Flora (CITES). 2022. <https://cites.org/eng/app/appendices.php>

EC. 2018. Commission Implementing Decision (EU) 2018/1986 of 13 December 2018 establishing specific control and inspection programmes for certain fisheries and repealing Implementing Decisions 2012/807/EU, 2013/328/EU, 2013/305/EU and 2014/156/EU. http://data.europa.eu/eli/dec_impl/2018/1986/2020-09-26

- EU Council. 2022a. Council Regulation (EU) 2022/109 of 27 January 2022 fixing for 2022 the fishing opportunities for certain fish stocks and groups of fish stocks applicable in Union waters and for Union fishing vessels in certain non-Union waters. Official Journal of the European Union. L21, 1–164. <https://eur-lex.europa.eu/eli/reg/2022/109/oj>
- EU Council. 2022b. Council Regulation (EU) 2022/110 of 27 January 2022 fixing for 2022 the fishing opportunities for certain fish stocks and groups of fish stocks applicable in the Mediterranean and Black Seas. Official Journal of the European Union. L21, 165–186. <https://eur-lex.europa.eu/eli/reg/2022/110/oj>
- EU Council. 2023. Council Regulation (EU) 2023/194 of 30 January 2023 fixing for 2023 the fishing opportunities for certain fish stocks, applicable in Union waters and, for Union fishing vessels, in certain non-Union waters, as well as fixing for 2023 and 2024 such fishing opportunities for certain deep-sea fish stocks. Official Journal of the European Union. L28, 1–219. <http://data.europa.eu/eli/reg/2023/194/oj>
- EU. 1992. Council Directive 92/43/EEC of 21 May 1992 on the conservation of natural habitats and of wild fauna and flora. European Communities, L 206: 7–50. <http://data.europa.eu/eli/dir/1992/43/oj>
- EU. 1996. Council Regulation (EC) No 338/97 of 9 December 1996 on the protection of species of wild fauna and flora by regulating trade therein. Official Journal of the European Communities, L 61: 1–69. <http://data.europa.eu/eli/reg/1997/338/oj>
- EU. 2000. Directive 2000/60/EC of the European Parliament and of the Council of 23 October 2000 establishing a framework for Community action in the field of water policy. Official Journal of the European Communities, L327: 1–73. <http://data.europa.eu/eli/dir/2000/60/oj>
- EU. 2007. Council Regulation (EC) No. 1100/2007 of 18 September 2007 establishing measures for the recovery of the stock of European eel. Official Journal of the European Union, L 248: 17–23. <http://data.europa.eu/eli/reg/2007/1100/oj>
- EU. 2008. Directive 2008/56/EC of the European Parliament and of the Council of June 17 2008 establishing a framework for community action in the field of marine environmental policy (Marine Strategy Framework Directive). Official Journal of the European Communities, L164: 19–40. <http://data.europa.eu/eli/dir/2008/56/oj>
- General Fisheries Commission for the Mediterranean (GFCM). 2018. Recommendation GFCM/42/2018/1 on a multiannual management plan for European eel in the Mediterranean Sea. Issued by the General Fisheries Commission for the Mediterranean. Available at <https://www.fao.org/faolex/results/details/en/c/LEX-FAOC201605/>
- General Fisheries Commission for the Mediterranean (GFCM). 2022. Recommendation GFCM/45/2022/1 on a multiannual management plan for European eel in the Mediterranean Sea, amending Recommendation GFCM/42/2018/1. <https://www.fao.org/faolex/results/details/en/c/LEX-FAOC220533>
- Helsinki Commission (HELCOM or Baltic Marine Environment Protection Commission). 2007. HELCOM Baltic Sea Action Plan. Adopted on 15 November 2007, Krakow, Poland. Updated 2021.
- ICES. 2016a. Report of the Working Group on Eels (WGEEL), 15–22 September 2016, Cordoba, Spain. ICES CM 2016/ACOM:19. 107 pp. <https://doi.org/10.17895/ices.pub.5626>
- ICES. 2016b. Report of the Workshop on Eel Stocking (WKSTOCKEEL), 20–24 June 2016, Toomebridge, Northern Ireland, UK. ICES CM 2016/SSGEPD:21. 75 pp
- ICES. 2019. Joint EIFAAC/ICES/GFCM Working Group on Eels (WGEEL). ICES Scientific Reports, 1:50. 177 pp. <http://doi.org/10.17895/ices.pub.5545>
- ICES. 2020. Joint EIFAAC/ICES/GFCM Working Group on Eels (WGEEL). ICES Scientific Reports, 2:85. 223 pp. <http://doi.org/10.17895/ices.pub.5982>
- ICES. 2021a. Joint EIFAAC/ICES/GFCM Working Group on Eels (WGEEL). Draft report. ICES Scientific Reports, 3:85. 205 pp. <https://doi.org/10.17895/ices.pub.8143> Publication of the full report is expected at the end of November 2021.
- ICES. 2021b. Workshop on the future of eel advice (WKFEA). ICES Scientific Reports, 3:13. 67 pp. <https://doi.org/10.17895/ices.pub.5988>
- ICES. 2022a. Workshop for the Technical evaluation of EU Member States' Progress Reports for submission in 2021 (WKEMP3). ICES Scientific Reports. 4:41. 177 pp. <http://doi.org/10.17895/ices.pub.19768585>

- ICES. 2022b. Joint EIFAAC/ICES/GFCM Working Group on Eels (WGEEL). ICES Scientific Reports. 4:62. <http://doi.org/10.17895/ices.pub.20418840>
- ICES. 2023a. Joint EIFAAC/ICES/GFCM Working Group on Eels (WGEEL). ICES Scientific Reports 05:98. <https://doi.org/10.17895/ices.pub.24420868>
- ICES. 2023b. WGEEL Data call 2023: Joint ICES/GFCM/EIFAAC eel data call. Data Calls. Report. <https://doi.org/10.17895/ices.pub.23309387.v1>
- ICES. 2023c. Advice on fishing opportunities. In Report of the ICES Advisory Committee, 2023. ICES Advice 2023, section 1.1.1. <https://doi.org/10.17895/ices.advice.22240624>
- IUCN. 2022. The IUCN Red List of Threatened Species. Version 2022-1. <https://www.iucnredlist.org> accessed on 06.10.2022.
- Oslo and Paris Conventions (OSPAR). 2014. OSPAR Recommendation 2014/15 on furthering the protection and conservation of the European eel (*Anguilla anguilla*) in Regions I, II, III and IV of the OSPAR maritime area, 14/21/1, Annex 20
- Oslo and Paris Conventions (OSPAR). 2022. Sheet reference: BDC2022/European eel. <https://oap.ospar.org/en/ospar-assessments/committee-assessments/biodiversity-committee/status-assessments/european-eel/>
- Pike, C., Crook, V., and Gollock, M. 2020. *Anguilla anguilla*. The IUCN Red List of Threatened Species 2020: e.T60344A152845178. <https://dx.doi.org/10.2305/IUCN.UK.2020-2.RLTS.T60344A152845178.en>. Accessed on 18 October 2023.
- United Nations (UN). 1976. Treaties and international agreements of field and recorded with Secretariat of the United Nations. Volume 996. No. 14583: Convention on wetlands of international importance especially as waterfowl habitat. Concluded at Ramsar, Iran, on 2 February 1971

Recommended citation: ICES. 2023. European eel (*Anguilla anguilla*) throughout its natural range. In Report of the ICES Advisory Committee, 2023. ICES Advice 2023 , ele.2737.nea, <https://doi.org/10.17895/ices.advice.21907860>.